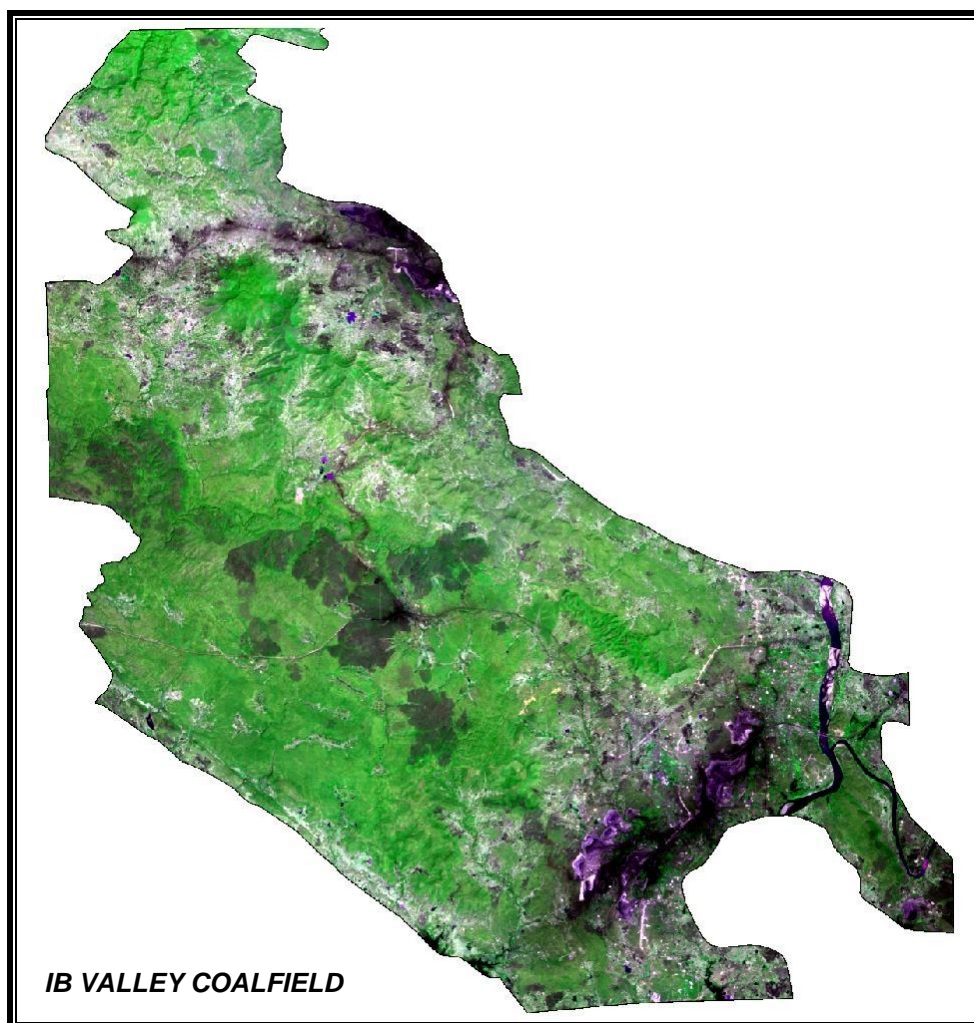


Report on Land Use / Vegetation Cover Mapping of Ib Valley Coalfield based on Satellite Data for the Year 2017



Submitted to

Mahanadi Coalfields Limited



cmpdi
A Mini Ratna Company

**Report on Land Use/ Vegetation Cover Mapping of
Ib Valley Coalfield based on Satellite data for the year 2017**

Submitted to
**Mahanadi Coalfields Limited
Sambalpur**

March - 2018



**Remote Sensing Cell
Geomatics Division
CMPDI (HQ), Ranchi**

Document Control Sheet

- (1) Job No. RSC-561410027
- (2) Publication Date March 2018
- (3) Number of Pages 37
- (4) Number of Figures 07
- (5) Number of Tables 12
- (6) Number of Plates 02
- (7) Number of Drawings 01
- (8) Title of the Report Land use/ Vegetation Cover mapping of Ib Valley Coalfield using satellite data of the year 2017.
- (9) Aim of the Report Preparation of land use/vegetation cover map of Ib Valley Coalfield on 1:50,000 scale based on Resourcesat-2/LISS-IV satellite data for creating the geo-environmental database.
- (10) Executing Unit Remote Sensing Cell
Geomatics Division
Central Mine Planning & Design Institute Ltd.
Gondwana Place, Kanke Road, Ranchi
- (11) User Agency Mahanadi Coalfields Limited, Sambalpur
- (12) Author Ms. A. Biswas, Manager(Geology)
Mr. R. Kumar, HOD(Geomatics)
- (13) Security Restriction Restricted Circulation
- (14) No. of Copies 6
- (15) Distribution Statement Official

List of Figures

- 1.1 Map of India showing the location of Ib Valley Coalfield.
- 2.1 Remote Sensing Radiation System.
- 2.2 Electromagnetic Spectrum
- 2.3 Expanded Diagram of the visible and infrared regions.
- 2.4 Methodology of Land use/ Vegetation cover mapping.
- 2.5 Geoid-Ellipsoid Projection relationship.
- 3.1 Pie Chart on Land Use/Cover Pattern in Ib Valley Coalfield in The Year 2017

List of Tables

- 2.1 Electromagnetic Spectral Regions
- 2.2 Characteristics of Satellite Sensor
- 2.3 Classification Accuracy Matrix
- 3.1 Land use / Vegetation Cover classes identified in Ib Valley Coalfield
- 3.2 Status of Land Use/Vegetation Cover pattern in Ib CF during Year 2014 and 2017
- 3.3 Block-wise Status of Land Use/ Vegetation Cover pattern in 2017
- 3.4 Status of Change in Vegetation Cover in Ib Valley CF during Year 2014 and 2017
- 3.5 Status of Change in Mining Area in Ib Valley CF during Year 2014 and 2017
- 3.6 Status of Change in Agriculture Area in Ib Valley CF during Year 2014 and 2017
- 3.7 Status of Change in Waste-land in Ib Valley CF during Year 2014 and 2017
- 3.8 Status of Change in Settlement Area in Ib Valley CF During Year 2014 and 2017
- 3.9 Status of Change in Water body in Ib Valley CF during Year 2014 and 2017

List of Plates

1. Plate No. 1 Resourcesat-2/LISS-IV FCC of Ib Valley Coalfield
2. Plate No. 2 Land use / Vegetation Cover Map of Ib Valley based on Resourcesat-2/LISS-IV data

List of Drawings

1. Land use/ Vegetation cover map of Ib Valley Coalfield based on Resourcesat-2/LISS-IV data of the year 2017

Contents

Description	Page No.
Document Control Sheet	ii
List of Figures	iii
List of Tables	iii
List of Plates	iii
1.0 Introduction	1-3
1.1 Project Reference	
1.2 Objective	
1.3 Location of the Area & Accessibility	
1.4 Physiography	
2.0 Remote Sensing Concept & Methodology	4-16
2.1 Remote Sensing	
2.2 Electromagnetic Spectrum	
2.3 Scanning System	
2.4 Data Source	
2.5 Characteristics of Satellite/Sensor	
2.6 Data Processing	
2.6.1 Geometric Correction, rectification & geo-referencing	
2.6.2 Image enhancement	
2.6.3 Training set selection	
2.6.4 Signature generation & classification	
2.6.5 Creation / Overlay of vector database in GIS	
2.6.6 Validation of classified image	
3.0 Land Use/ Cover Mapping	17-30
3.1 Introduction	
3.2 Land use/ Vegetation cover Classification	
3.3 Data Analysis in Ib Valley Coalfield	
3.3.1 Vegetation Cover	
3.3.2 Mining Area	
3.3.3 Agriculture	
3.3.4 Wasteland	
3.3.5 Settlement	
3.3.6 Water Bodies	
4.0 Conclusion and Recommendations	31
4.1 Conclusion	
4.2 Recommendations	

Chapter 1

Introduction

1.1 Project Reference

A road map was submitted by CMPDI to Coal India Ltd. for creating the geo-environmental data base of all the major coalfields and to assess the impact of coal mining and associated industrialization on land use and vegetation cover at regular interval of three years. Work order no. CIL/WBP/Env/2009/2428 dated 29.12.2009; was issued by CIL to CMPDI for the above study. In the year 2012, a revised work order CIL/WBP/ENV/2011/4706 dt. 12/10/2012 was issued for which was subsequently followed by another work order vide letter no. CIL/WBP/Env/2017/DP/8477 dated 21.09.2017 from Coal India Ltd. for the period 2017-18 to 2021-22 wherein land reclamation monitoring of opencast projects and vegetation cover monitoring of 19 major coalfields including Ib Valley Coalfield has to be done as per a defined plan for monitoring the impact of mining on vegetation cover.

1.2 Objective

The objective of the present study is to prepare a regional land use and vegetation cover map of Ib Valley coalfield on 1:50,000 scale based on satellite data of the year 2017, using digital image processing technique for creating the geo-environmental data base in respect of land use, vegetation cover, drainage, mining area, infrastructure etc. and up-dation of database at regular interval of three years to assess the impact of coal mining and other industrial activities on land use and vegetation cover in the coalfield area.

1.3 Location of the Area & Accessibility

Ib valley coalfield is located in the state of Orissa. It is broadly subdivided in two parts i.e. northern and southern. The northern half of the coalfield lies in Sundargarh district, whereas southern half lies in Jharsuguda district of Orissa. The area is well connected by rail and road to important business centres in Orissa like Rourkela, Jharsuguda, Sundargarh and Bhubaneswar. The Howrah-Mumbai railway line of the *South Eastern Railway* passes through the coalfield. Brajrajnagar, Belpahar and Himgir are the important Railway Stations through which the coalfield is approachable.

Ib Valley coalfield is confined to area bounded by latitude $21^{\circ}41'26''$ & $22^{\circ}09'02''$ N and longitudes $83^{\circ}33'40''$ E & $84^{\circ}00'21''$ E, covering an area of about 1186.60 Km². The location map of Ib Valley Coalfield is given at Figure 1.1.

1.4 Physiography

Ib Valley coalfield has undulating landscape with elevation ranging from 206 to 350 m above mean sea level. The coalfield is drained mainly by Ib River, Ghoghar Nadi, Sapai Nadi and Bhedan River among others.

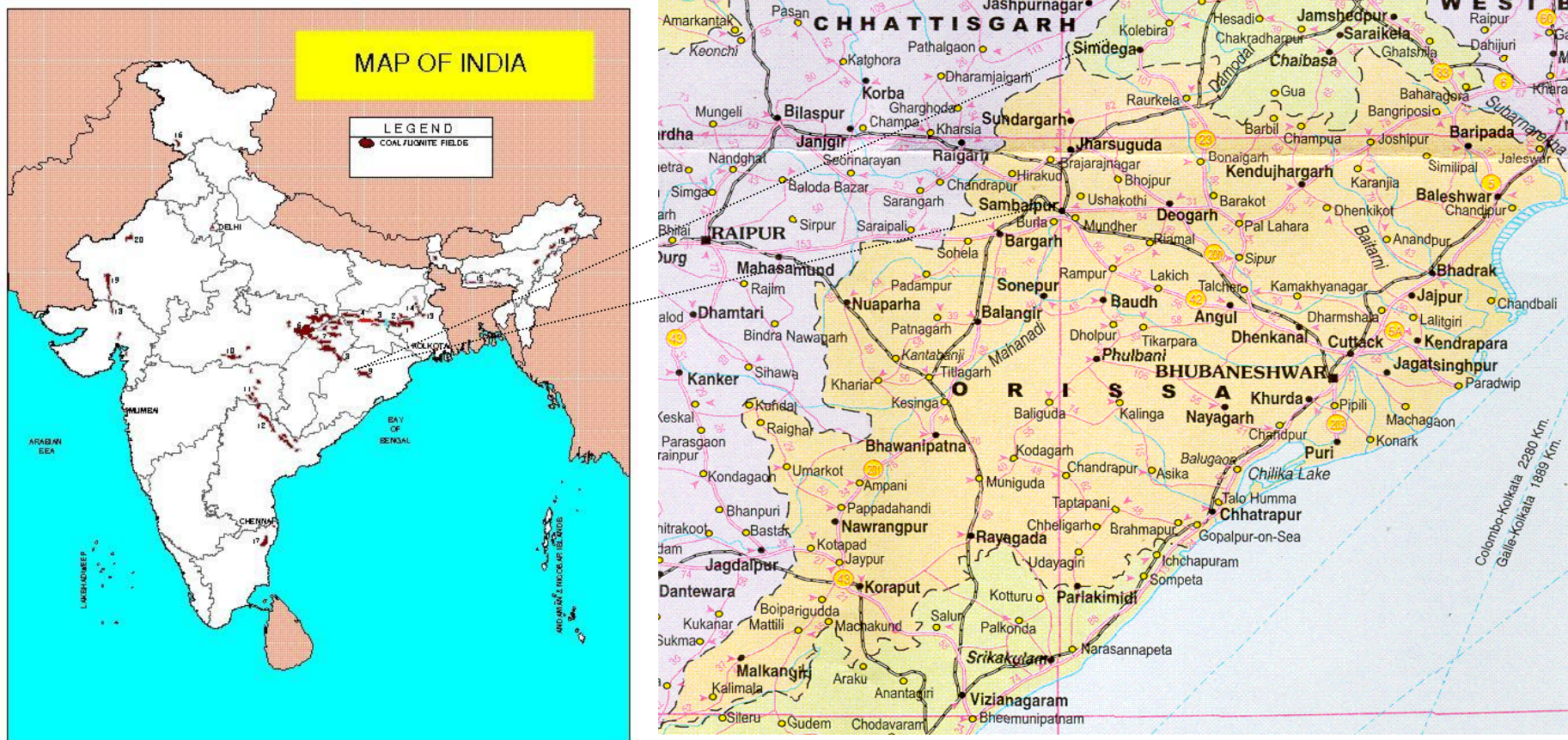


Fig 1.1 : Map of India Showing the Location of Ib Valley Coalfield

Chapter 2

Remote Sensing Concepts and Methodology

2.1 Remote Sensing

Remote sensing is the science and art of obtaining information about an object or area through the analysis of data acquired by a device that is not in physical contact with the object or area under investigation. The term *remote sensing* is commonly restricted to methods that employ electromagnetic energy (such as light, heat and radio waves) as the means of detecting and measuring object characteristics.

All physical objects on the earth surface continuously emit electromagnetic radiation because of the oscillations of their atomic

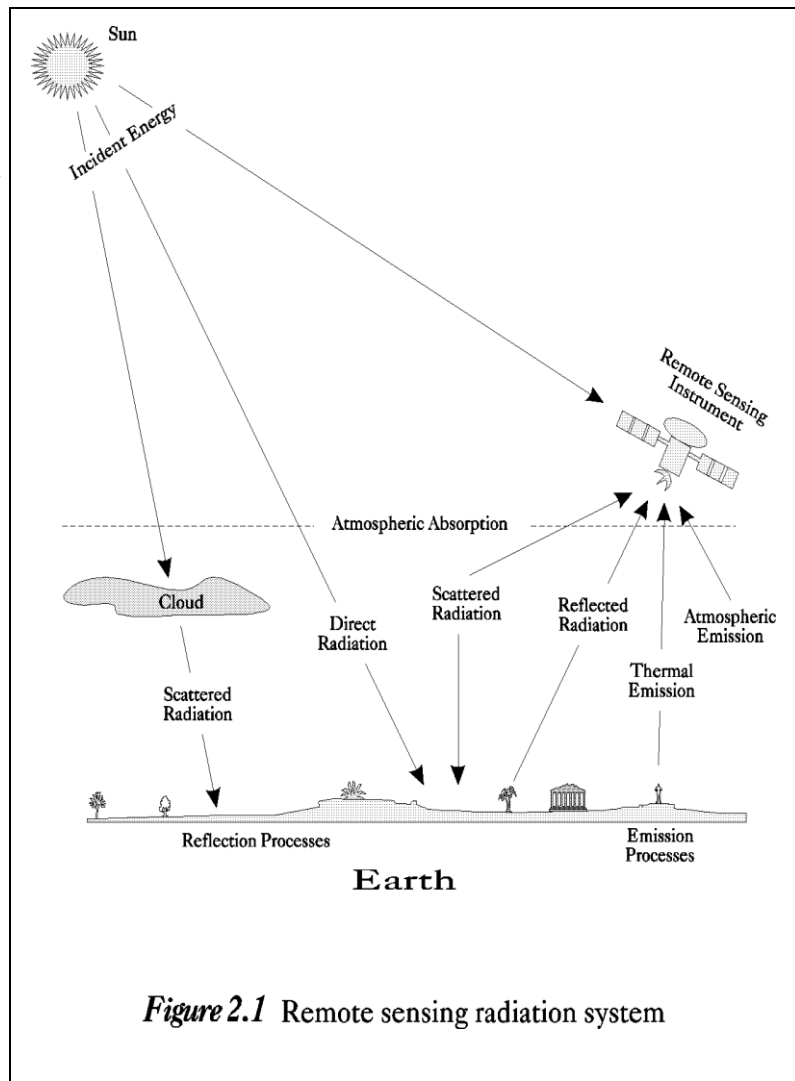


Figure 2.1 Remote sensing radiation system

particles. Remote sensing is largely concerned with the measurement of electromagnetic energy from the *SUN*, which is reflected, scattered or emitted by the objects on the surface of the earth. Figure 2.1 schematically illustrate the generalised processes involved in electromagnetic remote sensing of the earth resources.

2.2 Electromagnetic Spectrum

The electromagnetic (EM) spectrum is the continuum of energy that ranges from meters to nanometres in wavelength and travels at the speed of light. Different objects on the earth surface reflect different amounts of energy in various wavelengths of the EM spectrum.

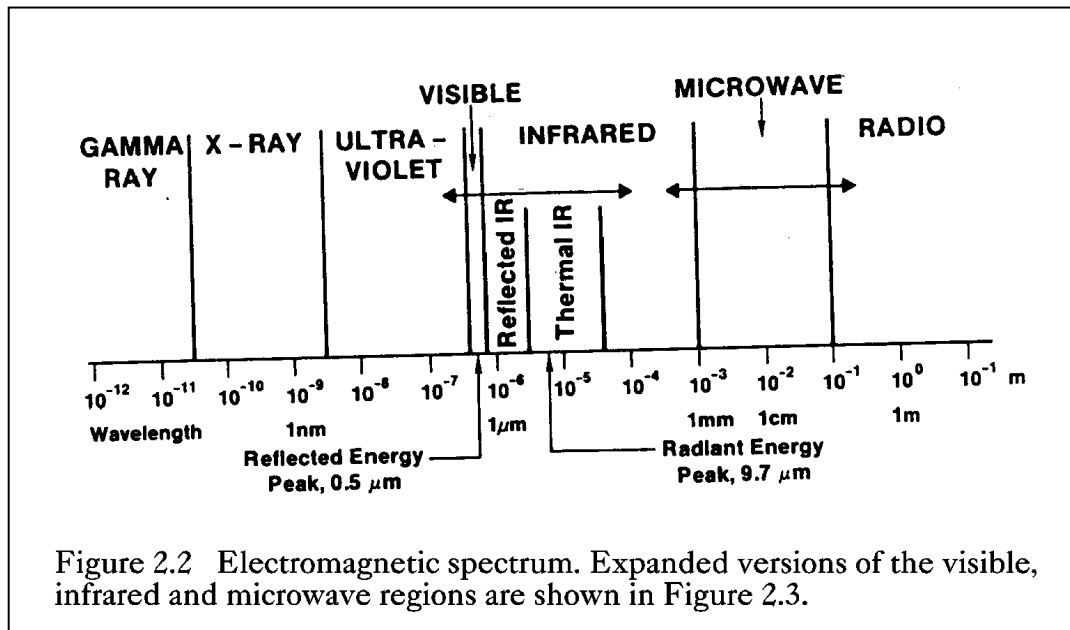


Figure 2.2 shows the electromagnetic spectrum, which is divided on the basis of wavelength into different regions that are described in Table 2.1. The EM spectrum ranges from the very short wavelengths of the gamma-ray region to the long wavelengths of the radio region. The visible region ($0.4\text{-}0.7\mu\text{m}$ wavelengths) occupies only a small portion of the entire EM spectrum.

Energy reflected from the objects on the surface of the earth is recorded as a function of wavelength. During daytime, the maximum amount of energy is reflected at $0.5\mu\text{m}$ wavelengths, which corresponds to the green band of the visible region, and is called the *reflected energy peak* (Figure 2.2). The earth also radiates energy both day and night, with the maximum energy $9.7\mu\text{m}$ wavelength. This *radiant energy peak* occurs in the thermal band of the IR region (Figure 2.2).

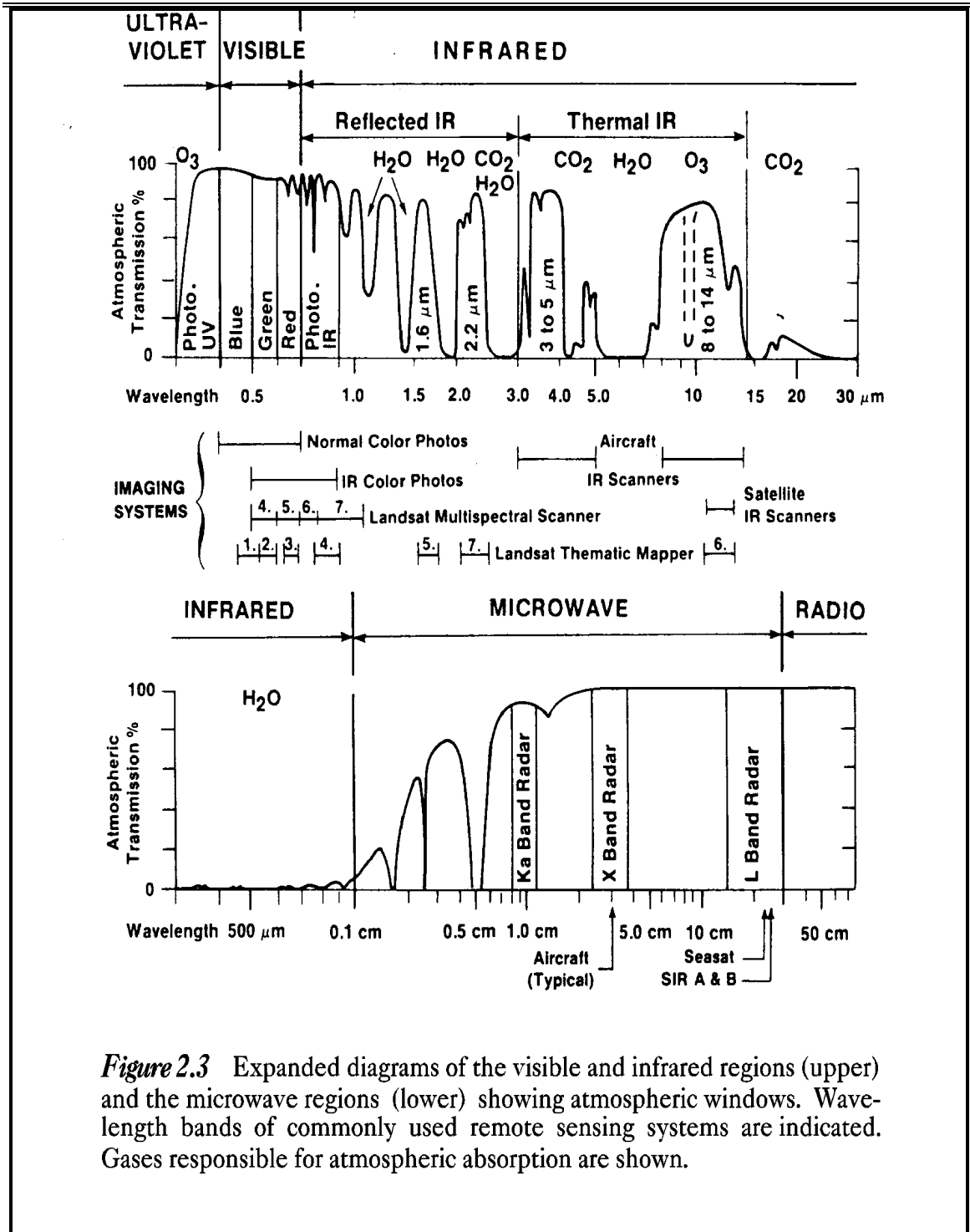


Figure 2.3 Expanded diagrams of the visible and infrared regions (upper) and the microwave regions (lower) showing atmospheric windows. Wavelength bands of commonly used remote sensing systems are indicated. Gases responsible for atmospheric absorption are shown.

Table 2.1 Electromagnetic spectral regions

Region	Wavelength		Remarks
<i>Gamma ray</i>	<	0.03 nm	Incoming radiation is completely absorbed by the upper atmosphere and is not available for remote sensing.
<i>X-ray</i>	0.03 to	3.00 nm	Completely absorbed by atmosphere. Not employed in remote sensing.
<i>Ultraviolet</i>	0.03 to	0.40 μm	Incoming wavelengths less than 0.3mm are completely absorbed by Ozone in the upper atmosphere.
<i>Photographic UV band</i>	0.30 to	0.40 μm	Transmitted through atmosphere. Detectable with film and photo detectors, but atmospheric scattering is severe.
<i>Visible</i>	0.40 to	0.70 μm	Imaged with film and photo detectors. Includes reflected energy peak of earth at 0.5mm.
<i>Infrared</i>	0.70 to	100.00 μm	Interaction with matter varies with wavelength. Absorption bands separate atmospheric transmission windows.
<i>Reflected IR band</i>	0.70 to	3.00 μm	Reflected solar radiation that contains no information about thermal properties of materials. The band from 0.7-0.9mm is detectable with film and is called the <i>photographic IR band</i> .
<i>Thermal IR band</i>	3.00 to 8.00 to	5.00 μm 14.00 μm	Principal atmospheric windows in the thermal region. Images at these wavelengths are acquired by optical-mechanical scanners and special videocon systems but not by film.
<i>Microwave</i>	0.10 to	30.00 cm	Longer wavelengths can penetrate clouds, fog and rain. Images may be acquired in the active or passive mode.
<i>Radar</i>	0.10 to	30.00 cm	Active form of microwave remote sensing. Radar images are acquired at various wavelength bands.
<i>Radio</i>	>	30.00 cm	Longest wavelength portion of electromagnetic spectrum. Some classified radars with very long wavelength operate in this region.

The earth's atmosphere absorbs energy in the gamma-ray, X-ray and most of the ultraviolet (UV) region; therefore, these regions are not used for remote sensing. Details of these regions are shown in Figure 2.3. The horizontal axes show wavelength on a logarithmic scale; the vertical axes show percent atmospheric transmission of EM energy. Wavelength regions with high transmission are called *atmospheric windows* and are used to acquire remote sensing data. The major remote sensing sensors record energy only in the visible, infrared and microwave regions. Detection and measurement of the recorded energy enables identification of surface objects (by their characteristic wavelength patterns or spectral signatures), both from air-borne and space-borne platforms.

2.3 Scanning System

The sensing device in a remotely placed platform (aircraft/satellite) records EM radiation using a *scanning system*. In scanning system, a *sensor*, with a narrow field of view is employed; this sweeps across the terrain to produce an image. The sensor receives electromagnetic energy radiated or reflected from the terrain and converts them into signal that is recorded as numerical data. In a remote sensing satellite, multiple arrays of linear sensors are used, with each array recording simultaneously a separate band of EM energy. The array of sensors employs a spectrometer to disperse the incoming energy into a spectrum. Sensors (or *detectors*) are positioned to record specific wavelength bands of energy. The information received by the sensor is suitably manipulated and transported back to the ground receiving station. The data are reconstructed on ground into digital images. The digital image data on *magnetic/optical media* consist of picture elements arranged in regular rows and columns. The position of any picture element, *pixel*, is determined on a x-y co-ordinate system. Each pixel has a numeric value, called digital number (DN), which records the intensity of electromagnetic energy measured for the ground resolution cell represented by that pixel. The range of digital numbers in an image data is controlled by the radiometric resolution of the satellite's sensor system. The digital image data are further processed to produce master images of the study area. By analysing the digital data/imagery, digitally/visually, it is possible to detect, identify and classify various objects and phenomenon on the earth surface.

Remote sensing technique provides an efficient, speedy and cost-effective method for assessing the changes in vegetation cover certain period of time due to its inherited capabilities of being multi-spectral, repetitive and synoptic aerial coverage.

2.4 Data Source

The following data are used in the present study:

- **Primary Data**
- Remote Sensing Satellite data viz. IRS R2/LISS-IV of March, 2017 was used in the present study. The raw digital satellite data was obtained from NRSC, Hyderabad.

- **Secondary Data**

Secondary (ancillary) and ground data constitute important baseline information in remote sensing, as they improve the interpretation accuracy and reliability of remotely sensed data by enabling verification of the interpreted details and by supplementing it with the information that cannot be obtained directly from the remotely sensed data. For **Ib Valley Coalfield**, Survey of India open series topo sheets no. F44L-12, F44L-16, F44R-9, F44R-10, F44R-13, F44R-14, F45M-1 & F45M-2 as well as map showing details of location of area boundary, coal field boundary and road supplied by MCL were used in the study.

2.5 Characteristics of Satellite/Sensor

The basic properties of a satellite's sensor system can be summarised as:

- (a) Spectral coverage/resolution, i.e., band locations/width;
 - (b) spectral dimensionality: number of bands;
 - (c) radiometric resolution: quantisation;
 - (d) spatial resolution/instantaneous field of view or IFOV; and
 - (e) temporal resolution.
- Table 2.2 illustrates the basic properties of Resourcesat satellite/sensor that is used in the present study.

Table 2.2 Characteristics of the satellite/sensor used in the present project work

Platform	Sensor	Spectral Bands in μm	Radiometric Resolution	Spatial Resolution	Temporal Resolution	Country
RESOU RCESAT - 2	LISS-IV	B2 0.52 - 0.59 Green B3 0.62 - 0.68 Red B4 0.76 - 0.86 NIR	16-bit	5.8 m 5.8 m 5.8 m	24 days	India

NIR: Near Infra-Red

2.6 Data Processing

The methodology for data processing carried out in the present study is shown in Figure 2.4. The processing involves the following major steps:

- (a) Geometric correction, rectification and geo-referencing;
- (b) Image enhancement;
- (c) Training set selection;
- (d) Signature generation and classification;
- (e) Creation/overlay of vector database;
- (f) Validation of classified image;
- (g) Layer wise theme extraction using GIS
- (g) Final vegetation map preparation.

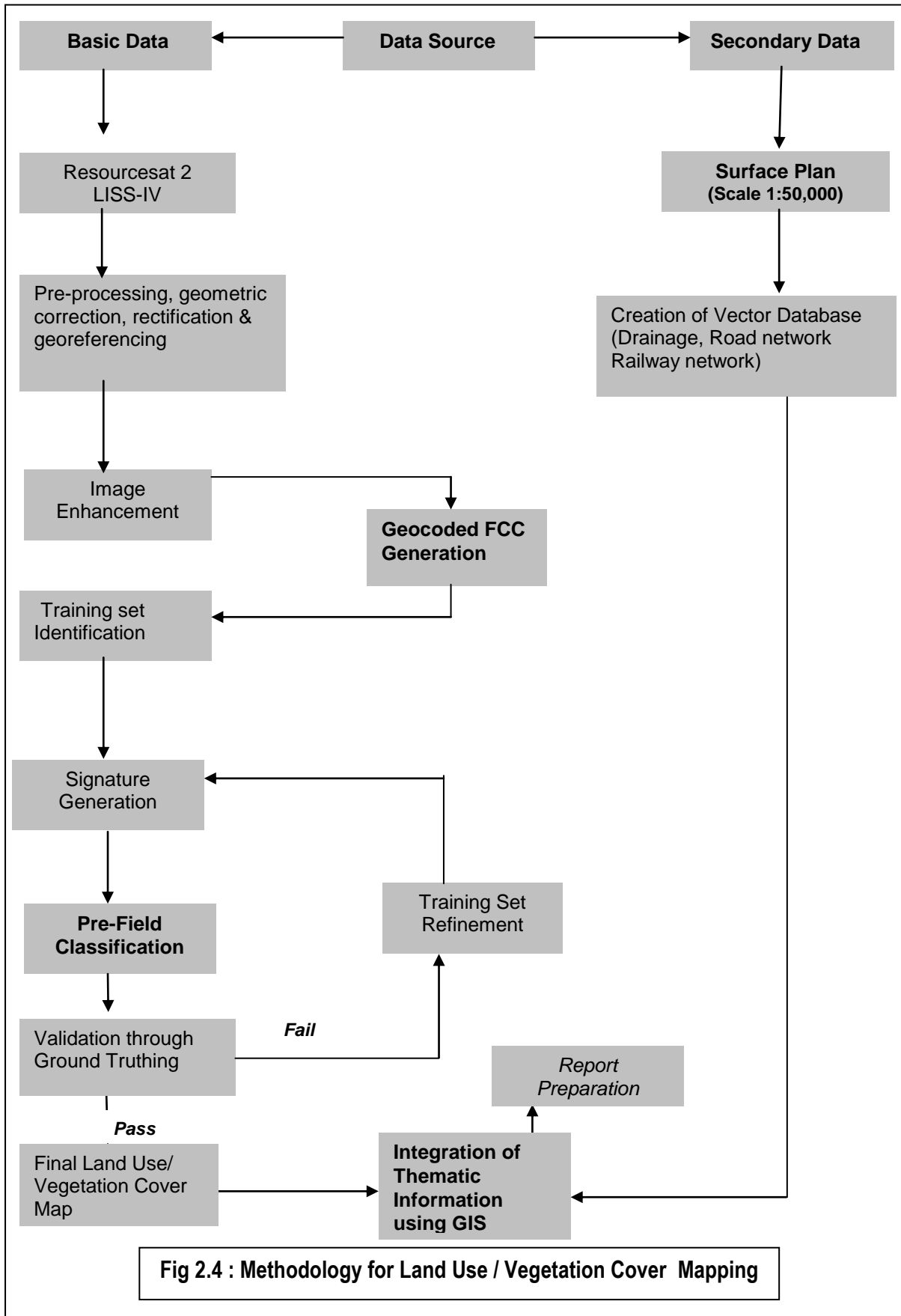


Fig 2.4 : Methodology for Land Use / Vegetation Cover Mapping

2.6.1 Geometric correction, rectification and georeferencing

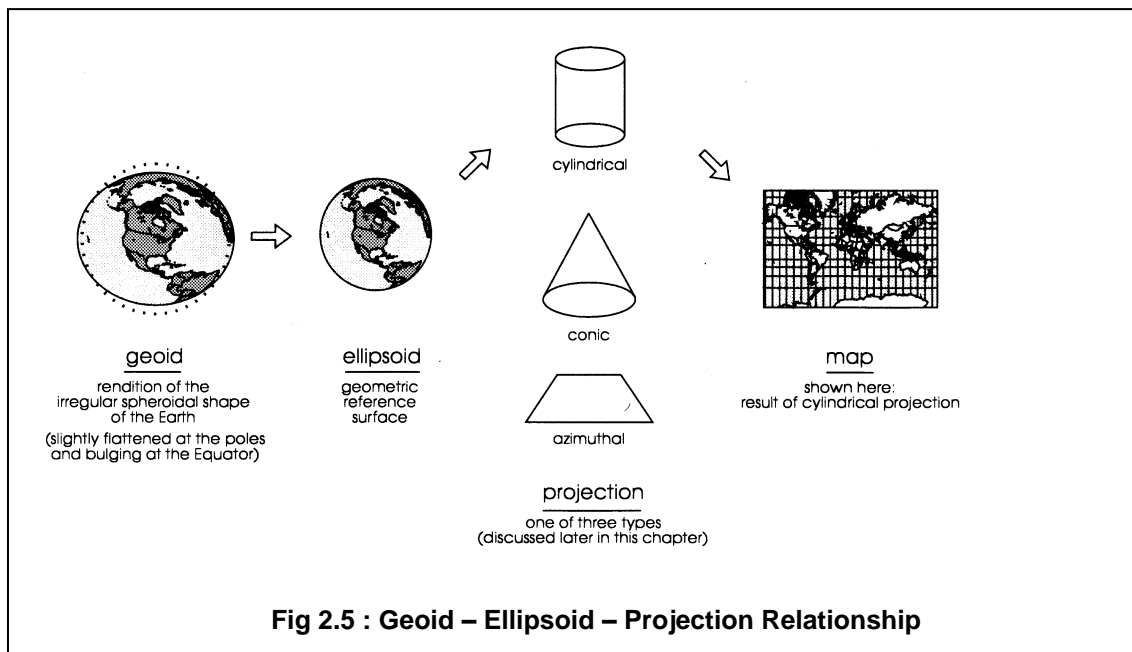
Inaccuracies in digital imagery may occur due to 'systematic errors' attributed to earth curvature and rotation as well as 'non-systematic errors' attributed to intermittent sensor malfunctions, etc. Systematic errors are corrected at the satellite receiving station itself while non-systematic errors/ random errors are corrected in pre-processing stage.

In spite of 'System / Bulk correction' carried out at supplier end; some residual errors in respect of attitude attributes still remains even after correction. Therefore, fine tuning is required for correcting the image geometrically using ground control points (GCP).

Raw digital images contain geometric distortions, which make them unusable as maps. A map is defined as a flat representation of part of the earth's spheroidal surface that should conform to an internationally accepted type of cartographic projection, so that any measurements made on the map will be accurate with those made on the ground. Any map has two basic characteristics: (a) scale and (b) projection. While *scale* is the ratio between reduced depiction of geographical features on a map and the geographical features in the real world, *projection* is the method of transforming map information from a sphere (round Earth) to a flat (map) sheet. Therefore, it is essential to transform the digital image data from a generic co-ordinate system (i.e. from line and pixel co-ordinates) to a projected co-ordinate system. In the present study geo-referencing was done with the help of Survey of India (Sol) topo-sheets so that information from various sources can be compared and integrated on a GIS platform, if required.

An understanding of the basics of projection system is required before selecting any transformation model. While maps are flat surfaces, Earth however is an irregular sphere, slightly flattened at the poles and bulging at the Equator. Map projections are systemic methods for "*flattening the orange peel*" in measurable ways. When transferring the Earth and its irregularities onto the plane surface of a

map, the following three factors are involved: (a) geoid (b) ellipsoid and (c) projection. Figure 2.5 illustrates the relationship between these three factors. The *geoid* is the rendition of the irregular spheroidal shape of the Earth; here the variations in gravity are taken into account. The observation made on the geoid is then transferred to a regular geometric reference surface, the *ellipsoid*. Finally, the geographical relationships of the ellipsoid (in 3-D form) are transformed into the 2-D plane of a map by a transformation process called map projection. As shown in Figure 2.5, the vast majority of projections are based upon *cones*, *cylinders* and *planes*.



In the present study, **UTM projection** along with **WGS 1984 Coordinate system** was used so as to prepare the map compatible with the satellite image.

2.6.2 Image enhancement

To improve the interpretability of the raw data, image enhancement is necessary. Most of the digital image enhancement techniques are categorised as either point or local operations. Point operations modify the value of each pixel in the image data independently. However, local operations modify the value of each pixel based on brightness value of neighbouring pixels. Contrast manipulations/

stretching technique based on local operation were applied on the image data using Erdas Imagine 2014 software. The enhanced and FCC image of Ib Valley Coalfield is shown in Plate No. 1.

2.6.3 Training set selection

The image data were analysed based on the interpretation keys. These keys are evolved from certain fundamental image-elements such as tone/colour, size, shape, texture, pattern, location, association and shadow. Based on the image-elements and other geo-technical elements like land form, drainage pattern and physiography; training sets were selected/ identified for each land use/cover class. Field survey was carried out by taking selective traverses in order to collect the ground information (or reference data) so that training sets are selected accurately in the image. This was intended to serve as an aid for classification. Based on the variability of land use/cover condition and terrain characteristics and accessibility, 90 points were selected to generate the training sets.

2.6.4 Signature generation and classification

Image classification was carried out using the minimum distance algorithm. The classification proceeds through the following steps: (a) calculation of statistics [i.e. signature generation] for the identified training areas, and (b) the decision boundary of maximum probability based on the mean vector, variance, covariance and correlation matrix of the pixels.

After evaluating the statistical parameters of the training sets, reliability test of training sets was conducted by measuring the statistical separation between the classes that resulted from computing divergence matrix. The overall accuracy of the classification was finally assessed with reference to ground truth data. The aerial extent of each land use class in the coalfield was determined using Erdas Imagine 2014 s/w. The classified image for the year 2017 for Ib Valley Coalfield is shown in Drawing No. HQREM17A0702.

2.6.5 Creation/overlay of vector database in GIS

Plan showing leasehold areas of mining projects supplied by MCL are superimposed on the image as vector layer in the GIS database. Road network, rail network and drainage network are digitised on different vector layers in GIS database. Layer wise theme extraction was carried out using ArcGIS s/w and imported the same on GIS platform for further analysis.

2.6.6 Validation of classified image

Ground truth survey was carried out for validation of the interpreted results from the study area. Based on the validation, classification accuracy matrix was prepared. The overall classification accuracy for the year 2017 was found to be 90%.

2.6.7 Final land use/vegetation cover map preparation

Final land use/vegetation cover map (Plate - 2) was generated on 1:50,000 scale using Arc GIS 10.2.2 s/w and the same is enclosed in the report.

A soft copy of this report is enclosed in .pdf format.

Table 2.3: Classification Accuracy Matrix for Ib Valley Coalfield in the year 2017

Sl. No.	Classes in the Satellite Data	Class	Total Obsrv. Points	Land use classes as observed in the field														
				C1	C2	C3	C4	C5	C6	C7	C8	C9	C10					
1	{ Urban Settlement	C1	05	5														
2	Plantation on OB	C2	10		8	1	1											
3	Open Forest	C3	10		1	8	1											
4	Scrubs	C4	10		1	1	7	1										
5	Social Forestry	C5	10				1	8	1									
6	Agriculture Land	C6	10					1	9									
7	Waste Upland	C7	10								10							
8	Plantation on Backfill	C8	10									10						
9	Quarry Area	C9	10											10				
10	Water Bodies	C10	10															10
Total no. of observation points			110	05	10	10	10	10	10	10	10	10	10	10	10	10	10	10
% of commission				00.0	20.0	20.0	30.0	20.0	10.0	0.0	0.0	0.0	0.0	0.0	0.0	0.0	0.0	0.0
% of omission				00.0	20.0	20.0	30.0	20.0	10.0	0.0	0.0	0.0	0.0	0.0	0.0	0.0	0.0	0.0
% of Classification Accuracy				100.0	80.0	80.0	70.0	80.0	90.0	100.0	100.0	100.0	100.0	100.0	100.0	100.0	100.0	100.0
Overall Accuracy (%)			90.000															

Chapter 3

Land Use/ Vegetation Cover Monitoring

3.1 Introduction

Land is one of the most important natural resource on which all human activities are based. Therefore, knowledge on different type of lands as well as its spatial distribution in the form of map and statistical data is vital for its geospatial planning and management for optimal use of the land resources. In mining industry, the need for information on land use/ vegetation cover pattern has gained importance due to the all-round concern on environmental impact of mining. The information on land use/ cover inventory that includes type, spatial distribution, aerial extent, location, rate and pattern of change of each category is of paramount importance for assessing the impact of coal mining on land use/ cover.

Remote sensing data with its various spectral and spatial resolutions, offers comprehensive and accurate information for mapping and monitoring of land use/cover over a period of time. By analysing the data of different cut-off dates, impact of coal mining on land use and vegetation cover can be determined.

3.2 Land Use / Vegetation Cover Classification

The array of information available on land use/ vegetation cover requires be arranging or grouping under a suitable framework in order to facilitate the creation of database. Further, to accommodate the changing land use/vegetation cover pattern, it becomes essential to develop a standardised classification system that is not only flexible in nomenclature and definition, but also capable of incorporating information obtained from the satellite data and other different sources.

The present framework of land use/cover classification has been primarily based on the '*Manual of Nationwide Land Use/ Land Cover Mapping Using Satellite Imagery*' developed by National Remote Sensing Centre, Hyderabad, which has further been modified by CMPDI for coal mining areas. Land use/vegetation cover map was prepared on the basis of image interpretation carried out based on the satellite data for the year 2017. Following land use/cover classes are identified in the Ib Valley coalfield region (Table 3.1).

Table 3.1		
Land use / Vegetation Cover classes identified in Ib Valley Coalfield		
	LEVEL -I	LEVEL-II
1	Vegetation Cover	1.1 Dense Forest 1.2 Open Forest 1.3 Scrub 1.4 Social Forestry 1.5 Plantation on OB Dumps 1.6 Plantation on Backfilled area
2	Mining Area	2.1 Coal Quarry 2.2 Advanced Quarry 2.3 Barren OB Dump 2.4 Barren Backfilled Area 2.5 Water Filled Quarry 2.6 Coal Stock / Dump
3	Agricultural Land	3.1 Crop Land 3.2 Fallow Land
4	Wasteland	4.1 Waste upland with/without scrubs 4.2 Fly Ash Pond 4.3 Sand Body
5	Settlements	5.1 Urban/Township 5.2 Village / Rural 5.3 Industrial
6	Water Bodies	6.1 River/Streams /Reservoir

3.3 Data Analysis

Satellite data of the year 2017 was processed using Erdas Imagine 2014 image processing s/w in order to interpret the various land use and vegetation cover classes present in the Ib Valley coalfield. The analysis was carried out for entire coalfield covering about 1186.60 sq. km.

Due to paper size limitation in the plotter, the following maps are printed on 1:70,000 scale :

Plate No. 1: FCC (RS-2 / LISS-IV) data of Ib Valley coalfield of March, 2017 with Coalfield boundary and other infrastructural details.

Plate No. 2: Land use/Cover Map of Ib valley Coalfield based on LISS-IV data.

The area of each class was calculated and analysed using Erdas Imagine 2014 s/w and *ArcGIS* s/w. Analysis of land use / vegetation cover pattern in Ib Valley Coalfield for the year 2017 was carried out and details of the analysis are shown in Table 3.2. Block wise land use / vegetation cover pattern data are shown in Table 3.3.

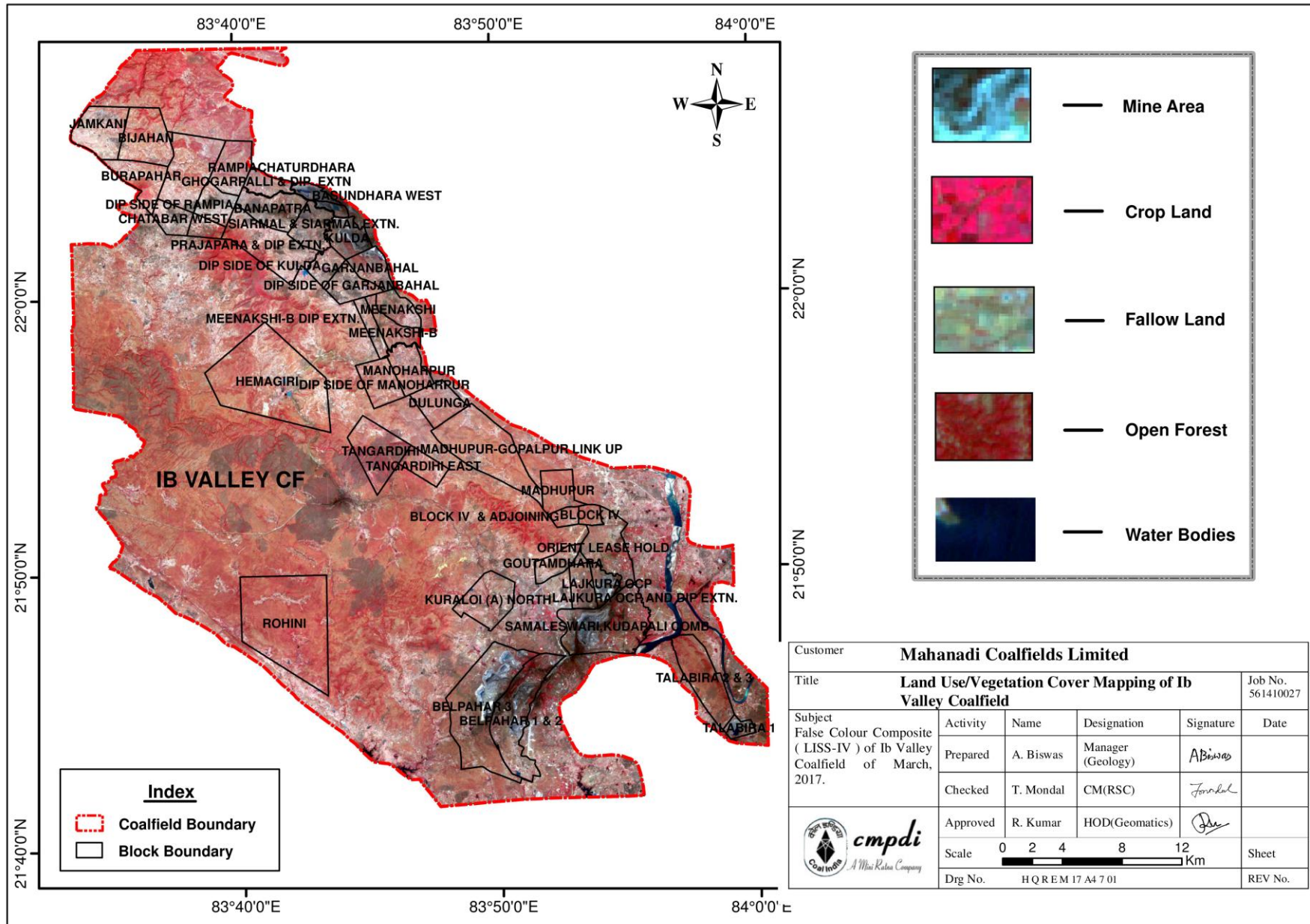


Plate 1: FCC (Band 2, 3, 4) of IB Valley CF based on RS-2 (LISS-IV) Data of Year – 2017

Customer		Mahanadi Coalfields Limited			
Title		Land Use/Vegetation Cover Mapping of IB Valley Coalfield			Job No. 561410027
Subject	False Colour Composite (LISS-IV) of IB Valley Coalfield of March, 2017.	Activity	Name	Designation	Signature
		Prepared	A. Biswas	Manager (Geology)	<i>A. Biswas</i>
		Checked	T. Mondal	CM(RSC)	<i>T. Mondal</i>
		Approved	R. Kumar	HOD(Geomatics)	<i>R. Kumar</i>
Scale		0 2 4 8 12 Km			Sheet
Drg No.		HQREM 17 A4 7 01			REV No.



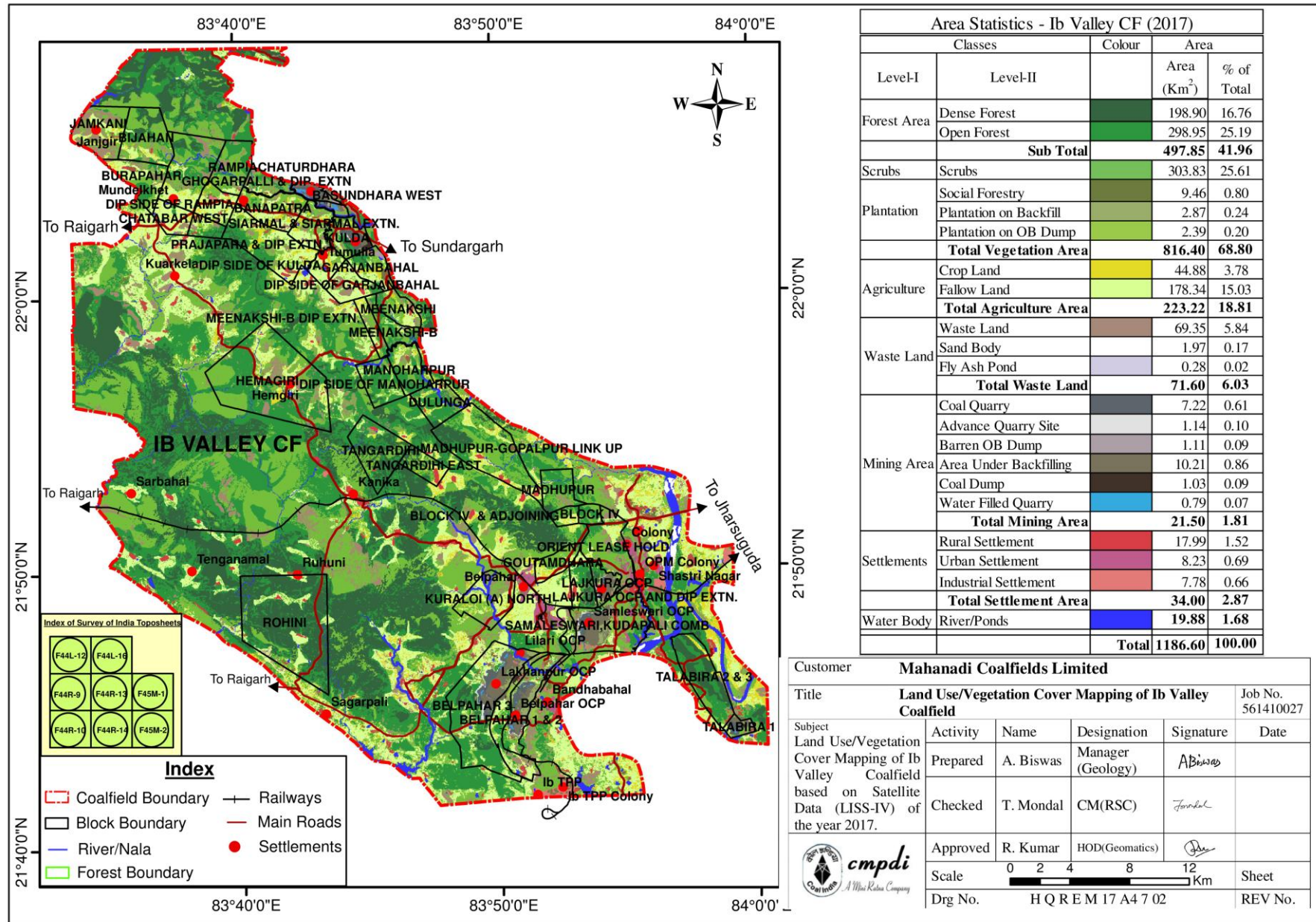


Plate 2: Land Use / Vegetation Cover Map of Ib Valley CF based on RS-2 (LISS-IV) Data of Year 2017

TABLE – 3.2
STATUS OF LAND USE & VEGETATION COVER PATTERN IN IB VALLEY COALFIELD IN THE YEAR 2014 & 2017

								Area in Sq. Km.	
Table 3.2 Status of Land Use/ Cover Pattern in Ib Valley Coalfield During Year 2014 and 2017									
Classes		Year 2014		Year 2017		Change w.r.t. Yr 2014		Remarks	
		Area Km ²	%	Area Km ²	%	Area Km ²	%		
Level I	Level II								
Vegetation Cover	Dense forest	199.76	16.83	198.90	16.76	-0.86	-0.07	Due to biotic interference	
	Open Forest	298.45	25.15	298.95	25.19	0.50	0.04		
	Total Forest(A)	498.21	41.99	497.85	41.96	-0.36	-0.03		
		Scrubs(B)	302.65	25.51	303.83	25.61	1.18	0.10	Due to coal mine advancement and fresh dumps
		Plantation on OB Dump	2.44	0.21	2.39	0.20	-0.05	0.00	
		Plantation on Backfill	2.87	0.24	2.87	0.24	0.00	0.00	
		Social Forestry	9.64	0.81	9.46	0.80	-0.18	-0.02	
		Total Plantation(C)	14.95	1.26	14.72	1.24	-0.23	-0.02	
	Total Vegetation (A+B+C)	815.81	68.75	816.40	68.80	0.59	0.05		
Agriculture	Crop land	47.23	3.98	44.88	3.78	-2.35	-0.20	Due to decrease in wasteland	
	Fallow Land	175.31	14.77	178.34	15.03	3.03	0.26		
	Total Agriculture	222.54	18.75	223.22	18.81	0.68	0.06		
Waste Land	Waste Land with/without scrub	77.48	6.53	69.35	5.84	-8.13	-0.69	Decrease in wasteland area is due to increase in mining area and waterbody	
	Sand Body	3.12	0.26	1.97	0.17	-1.15	-0.10		
	Fly Ash Pond	0.28	0.02	0.28	0.02	0.00	0.00		
	Total Wasteland	80.88	6.82	71.60	6.03	-9.28	-0.78		
Mining Area	Coal Quarry	6.40	0.54	7.22	0.61	0.82	0.07	Due to increase in mining activity to meet high coal demand.	
	Advance Quarry Site	0.73	0.06	1.14	0.10	0.41	0.03		
	Barren OB Dump	1.04	0.09	1.11	0.09	0.08	0.01		
	Barren Backfill	7.61	0.64	10.21	0.86	2.60	0.22		
	Coal Dump	1.22	0.10	1.03	0.09	-0.19	-0.02		
	Water Filled Quarry	0.63	0.05	0.79	0.07	0.16	0.01		
	Total	17.63	1.49	21.50	1.81	3.87	0.33		
Water Body	River/ Ponds	15.76	1.33	19.88	1.68	4.12	0.35		
Settlements	Urban Settlements	8.23	0.69	8.23	0.69	0.00	0.00	Due to rural development in the area	
	Rural Settlements	17.96	1.51	17.99	1.52	0.03	0.00		
	Industrial Settlements	7.78	0.66	7.78	0.66	0.00	0.00		
	Total	33.97	2.86	34.00	2.87	0.03	0.003		
Total		1186.60	100.00	1186.60	100.00				

TABLE – 3.3 BLOCKWISE STATUS OF LAND USE & VEGETATION COVER PATTERN IN THE YEAR 2017

Area in Sq. Km.

Sl. No.	Block Name	Class Distribution																			Total	
		Dense Forest	Open Forest	Scrubs	Plantation on OB	Plantation on Backfilled	Social Forestry	Crop Land	Fallow Land	Waste Land	Sand Body	Coal Quarry	Advanced Quarry	Barren OB Dump	Area Under Backfilling	Coal Dump	Water Filled Quarry	Rural Settlement	Urban Settlement	Industrial Settlement		Water Body
1	DIP EXTN. OF SAMALESWARI	0.00	1.67	0.84	0.11	0.00	0.00	0.81	3.98	0.19	0.00	0.00	0.00	0.00	0.00	0.00	0.00	0.12	0.00	0.03	7.74	
2	SAMALESWARI-KUDOPALI COMB. & DIP EXTN.	0.05	1.42	5.39	0.46	0.65	0.37	0.07	0.61	2.29	0.00	0.97	0.23	0.09	2.58	0.09	0.05	0.73	0.31	0.32	0.39	17.06
3	LAJKURA OCP & ITS DIP EXTN.	1.23	2.46	0.66	0.16	0.17	0.04	0.19	0.80	0.44	0.00	0.40	0.11	0.03	1.06	0.00	0.04	0.35	0.00	0.03	0.02	8.18
4	ORIENT COLLIERY LEASEHOLD	0.00	1.44	4.24	0.05	0.00	0.23	0.41	1.36	1.69	0.00	0.00	0.00	0.02	0.02	0.01	0.00	0.00	0.46	0.03	0.01	9.97
5	ORIENT WEST (GOUTAMDHARA)	0.00	0.32	2.02	0.00	0.00	0.00	0.60	1.17	0.00	0.00	0.00	0.00	0.00	0.00	0.00	0.00	0.00	0.04	0.00	0.00	4.15
6	DIP SIDE OF LAJKURA	0.00	0.18	0.19	0.00	0.00	0.00	0.38	3.56	0.05	0.00	0.00	0.00	0.00	0.00	0.00	0.00	0.14	0.05	0.00	0.02	4.55
7	MEENAKSHI DIPSIDE	0.00	0.40	1.14	0.00	0.00	0.03	0.33	0.89	0.50	0.00	0.00	0.00	0.00	0.00	0.00	0.00	0.05	0.00	0.00	0.01	3.34
8	MEENAKSHI-B	0.03	2.16	1.82	0.00	0.00	0.00	0.13	0.27	0.35	0.00	0.00	0.00	0.00	0.00	0.00	0.00	0.00	0.00	0.00	0.15	4.92
9	MANOHARPUR	0.01	2.60	2.01	0.00	0.00	0.07	0.38	0.84	0.45	0.00	0.00	0.00	0.00	0.00	0.00	0.00	0.05	0.00	0.00	0.14	6.54
10	MEENAKSHI	0.00	0.64	1.82	0.00	0.00	0.07	0.40	1.18	0.57	0.00	0.00	0.00	0.00	0.00	0.00	0.00	0.14	0.00	0.00	0.06	4.89
11	GARJANBAHAL	0.13	0.70	1.31	0.00	0.00	0.29	0.55	1.30	0.43	0.00	0.00	0.00	0.20	0.00	0.04	0.00	0.14	0.00	0.00	0.09	5.18
12	TALABIRA-II & III	4.46	5.13	1.07	0.00	0.00	0.00	0.41	0.23	0.26	0.00	0.00	0.00	0.00	0.00	0.00	0.00	0.10	0.00	0.00	0.02	11.68
13	TALABIRA-I	0.00	0.10	0.54	0.00	0.04	0.00	0.05	0.28	0.21	0.00	0.58	0.00	0.01	0.46	0.05	0.03	0.04	0.00	0.00	0.17	2.58
14	GHOARPALLI & ITS DIP EXTN.	0.80	3.69	4.59	0.00	0.00	0.00	0.56	2.64	1.70	0.00	0.00	0.00	0.00	0.00	0.00	0.00	0.16	0.00	0.00	0.25	14.39
15	RAMPJA	0.01	2.48	3.31	0.00	0.00	0.00	0.09	0.41	0.97	0.00	0.00	0.00	0.00	0.00	0.00	0.00	0.02	0.00	0.00	0.16	7.44
16	BIJAHAN	1.65	1.56	5.40	0.00	0.00	0.00	0.40	0.98	0.83	0.00	0.00	0.00	0.00	0.00	0.00	0.00	0.05	0.00	0.00	0.05	10.93
17	CHATABAR WEST	0.00	0.14	0.22	0.00	0.00	0.00	0.37	3.21	0.32	0.00	0.00	0.00	0.00	0.00	0.00	0.00	0.25	0.00	0.00	0.10	4.61
18	BURAPAHAR	0.00	1.47	1.94	0.00	0.00	0.11	0.31	2.41	0.82	0.00	0.00	0.00	0.00	0.00	0.00	0.00	0.15	0.00	0.00	0.00	7.20
19	CHATABAR EAST	0.21	0.95	0.57	0.00	0.00	0.00	0.18	0.46	0.34	0.00	0.00	0.00	0.00	0.00	0.00	0.00	0.14	0.00	0.00	0.00	2.84
20	ROHINI	19.04	7.16	3.26	0.00	0.00	0.07	0.82	4.09	0.54	0.00	0.00	0.00	0.00	0.00	0.00	0.00	0.32	0.00	0.00	0.31	35.60
21	MADHUPUR-GOPALPUR LINK UP	2.81	4.78	7.71	0.00	0.00	0.06	1.51	2.63	0.02	0.00	0.00	0.00	0.00	0.00	0.00	0.00	0.60	0.00	0.00	0.16	20.27
22	TANGARDIHI EAST	1.26	0.60	1.38	0.00	0.00	0.00	0.42	0.45	0.02	0.00	0.00	0.00	0.00	0.00	0.00	0.00	0.28	0.00	0.00	0.00	4.41
23	TANGARDIHI	4.02	4.10	2.14	0.00	0.00	0.00	0.15	0.29	0.21	0.00	0.00	0.00	0.00	0.00	0.00	0.00	0.14	0.00	0.00	0.06	11.11
24	JAMKHANI	0.01	0.14	3.50	0.00	0.00	0.07	0.54	1.65	3.80	0.00	0.00	0.00	0.00	0.00	0.00	0.00	0.09	0.00	0.00	0.01	9.81
25	DIP SIDE OF MANOHARPUR	0.21	2.71	1.70	0.00	0.00	0.00	0.00	0.45	0.19	0.00	0.00	0.00	0.00	0.00	0.00	0.00	0.02	0.00	0.00	0.04	5.32
26	DULUNGA	0.21	3.46	1.05	0.00	0.00	0.13	0.39	0.61	0.42	0.00	0.00	0.00	0.00	0.00	0.00	0.00	0.09	0.00	0.00	0.17	6.53
27	DIP SIDE OF GARJANBAHAL	0.00	0.35	0.59	0.00	0.00	0.02	0.22	3.32	0.92	0.00	0.00	0.00	0.00	0.00	0.00	0.00	0.25	0.00	0.00	0.01	5.67
28	KULDA	0.55	0.52	1.96	0.00	0.00	0.00	0.09	0.44	0.50	0.00	1.01	0.09	0.00	0.15	0.30	0.00	0.00	0.00	0.00	0.12	5.73
29	BASUNDHARA WEST	0.00	0.01	0.13	0.06	0.00	0.02	0.00	0.03	0.09	0.00	0.91	0.01	0.25	0.56	0.04	0.23	0.00	0.00	0.00	0.09	2.43
30	BASUNDHARA EAST	0.00	0.07	0.36	0.00	0.01	0.00	0.00	0.00	0.10	0.00	0.14	0.00	0.09	0.18	0.10	0.17	0.00	0.00	0.03	0.01	1.27
31	SIARMAL & SIARMAL EXTN.	0.07	0.00	2.54	0.00	0.00	0.05	0.41	2.10	0.98	0.01	0.00	0.00	0.00	0.00	0.00	0.00	0.11	0.02	0.00	0.09	6.37
32	DIP EXTN. OF RAMPJA	0.00	0.07	0.93	0.00	0.00	0.20	0.78	2.80	0.19	0.00	0.00	0.00	0.00	0.00	0.00	0.00	0.11	0.00	0.14	0.00	5.23
33	DIP SIDE OF KULDA	0.00	0.01	0.79	0.00	0.00	0.14	0.26	2.13	0.14	0.00	0.00	0.00	0.00	0.00	0.00	0.00	0.14	0.00	0.00	0.15	3.76
34	BELPAHAR I, II & III COMB.	1.82	10.29	6.70	0.74	1.72	0.83	0.54	6.72	2.71	0.00	3.24	0.70	0.07	5.17	0.18	0.27	0.43	0.00	0.17	0.59	42.89
35	DIP SIDE OF SAMALESWARI	0.02	1.03	2.26	0.23	0.00	0.52	0.14	1.85	0.76	0.00	0.00	0.00	0.00	0.00	0.00	0.00	0.00	1.59	0.48	0.05	8.92
36	MADHUPUR	0.57	3.01	2.98	0.00	0.00	0.00	0.18	0.39	0.35	0.00	0.00	0.00	0.00	0.00	0.00	0.00	0.00	0.00	0.00	0.08	7.57
37	DIP SIDE OF BLOCK-IV	2.36	0.52	1.67	0.00	0.00	0.00	0.16	0.30	0.00	0.00	0.00	0.00	0.00	0.00	0.00	0.00	0.00	0.00	0.00	0.00	5.01
38	BLOCK-IV	0.00	2.87	2.58	0.00	0.00	0.00	0.07	0.33	0.40	0.00	0.00	0.00	0.00	0.00	0.00	0.00	0.00	0.00	0.00	0.01	6.27
39	HEMAGIRI	0.28	15.12	10.69	0.00	0.00	0.29	1.27	3.62	4.20	0.00	0.00	0.00	0.00	0.00	0.00	0.00	0.33	0.00	0.00	0.45	36.27
40	BANAPATRA	0.00	0.19	2.82	0.00	0.00	0.32	0.73	3.19	0.53	0.00	0.00	0.00	0.00	0.01	0.00	0.00	0.37	0.01	0.00	0.18	8.36
41	PRAJAPARA DIP EXTN.	1.05	3.26	2.26	0.00	0.00	0.12	0.73	2.62	0.51	0.00	0.00	0.00	0.00	0.00	0.00	0.00	0.25	0.00	0.00	0.11	10.90
42	PRAJAPARA	0.00	0.00	1.04	0.00	0.00	0.13	0.91	3.35	0.20	0.00	0.00	0.00	0.00	0.00	0.00	0.00	0.12	0.00	0.00	0.08	5.83
43	CHATURDHARA	0.00	1.00	1.43	0.00	0.00	0.01	0.10	0.25	0.87	0.00	0.00	0.00	0.00	0.00	0.00	0.00	0.02	0.00	0.00	0.09	3.77
44	KURALOI-A NORTH	0.00	0.00	4.01	0.00	0.00	0.00	0.66	1.58	1.36	0.00	0.00	0.00	0.00	0.00	0.00	0.00	0.00	0.00	0.00	0.22	7.83

3.3.1 Vegetation cover Analysis

Vegetation cover is an association of trees and other vegetation type capable of producing timber and other forest produce. It is also defined as the percentage of soil which is covered by green vegetation. Leaf area index (LAI) is an alternative expression of the term vegetation cover which gives the area of leaves in m² corresponding to an area of one m² of ground.

Vegetation cover in the coalfield area comprises of following six classes:

- Dense Forest
- Open Forest
- Scrubs
- Plantation on OB Dumps
- Plantation on Backfilled Area and
- Social Forestry

The variations in the vegetation cover classes are shown in Table 3.4.

								Area in Sq. Km.
Table 3.4 Status of Change in Vegetation Cover in Ib Valley Coalfield During Year 2014 and 2017								
Classes		Year 2014		Year 2017		Change w.r.t. Yr 2014		Remarks
		Area Km ²	%	Area Km ²	%	Area Km ²	%	
Level I	Level II							
Vegetation Cover	Dense forest	199.76	16.83	198.90	16.76	-0.86	-0.07	Due to biotic interference
	Open Forest	298.45	25.15	298.95	25.19	0.50	0.04	
	Total Forest(A)	498.21	41.99	497.85	41.96	-0.36	-0.03	
	Scrubs(B)	302.65	25.51	303.83	25.61	1.18	0.10	Due to coal mine advancement and fresh dumps
	Plantation on OB Dump	2.44	0.21	2.39	0.20	-0.05	0.00	
	Plantation on Backfill	2.87	0.24	2.87	0.24	0.00	0.00	
	Social Forestry	9.64	0.81	9.46	0.80	-0.18	-0.02	
		Total Plantation(C)	14.95	1.26	14.72	1.24	-0.23	-0.02
	Total Vegetation (A+B+C)	815.81	68.75	816.40	68.80	0.59	0.05	

- **Dense Forest** – Forest having crown density more than 40% comes under this class. In the year 2014 total area of dense forest in Ib Valley CF was 199.76 km² (16.83%). In year 2017 total area of dense forest is 198.90 km² (16.76%). There is a decrease in total dense forest by 0.86 km² which is 0.07% of the total area. This decrease is due to biotic interference.

- **Open Forest** – Forest having crown density between 10%-40% comes under this class. In the year 2014 total area of open forest in Ib Valley CF was 298.45 km² (25.15%). In year 2017 total area of open forest in Ib Valley CF is 298.95 km² (25.19%). There is an increase in total open forest by 0.50 km² which is due to conversion of dense forests into open forest area.

- **Scrubs** – Scrubs are vegetation with crown density less than 10%. Scrubs in the coalfield are seen to be scattered signature all over the area mixed with waste land and fallow land. There were 302.65 km² scrubs i.e. 25.51% of the coal field area presents in 2014. In current year 303.83 km² i.e. 25.61% scrub is present. So there is an increase of 1.18 km² which is 0.10% of the total coalfield. This increase is on account of growth of scrub in fallow and waste lands.

- **Plantation Over OB Dump**– Analysis of the data reveals that plantation over ob dumps are estimated to be 2.39 km² i.e. 0.20% of total coalfield in current year. Whereas in 2014 plantation was 2.44 km² i.e. 0.21% of coalfield. The 0.05 km² decrease is due to fresh dumping over planted area.

- **Plantation Over Backfilled Area**- Analysis of the data reveals that plantation over backfilled area is 2.87 km² i.e. 0.24% of total coalfield in both the years.

- **Social Forestry** - Plantations which have been carried out along the roadsides and colonies on the green belt come under this category. There is a decrease of 0.18 km² social forestry, i.e. 0.02% of total coalfield is present in current year. This negligible decrease is due to mining activities.

3.3.2 Mining

The mining area includes the area of

- Coal Quarry
- Advance Quarry Site
- Barren OB Dumps
- Barren Backfilled Area
- Coal Dumps and
- Water Filled Quarry Area.

The variations in the mining area classes are shown in Table 3.5

Area in Sq. Km.

Classes		Year 2014		Year 2017		Change w.r.t. Yr 2014		Remarks
		Area Km ²	%	Area Km ²	%	Area Km ²	%	
Level I	Level II							
Mining Area	Coal Quarry	6.40	0.54	7.22	0.61	0.82	0.07	Due to increase in mining activity to meet high coal demand.
	Advance Quarry Site	0.73	0.06	1.14	0.10	0.41	0.03	
	Barren OB Dump	1.04	0.09	1.11	0.09	0.08	0.01	
	Barren Backfill	7.61	0.64	10.21	0.86	2.60	0.22	
	Coal Dump	1.22	0.10	1.03	0.09	-0.19	-0.02	
	Water Filled Quarry	0.63	0.05	0.79	0.07	0.16	0.01	
	Total	17.63	1.49	21.50	1.81	3.87	0.33	

In the year 2014 coal quarry was 6.40 km² which has increased to 7.22 km² in year 2017. This minor increase is due to increase in production of coal from open cast areas. In 2014 barren ob dump was 1.04 km² (0.09%) which has been increased to

1.11 km² (0.09%). Barren backfilled area has increased to 7.61 km² (0.64%) from 10.21 km² (0.86%). This increase is due to increase in mining activity. In current year total mining area covers 21.50 km² (1.81%) while in 2014 area under mining activities was 17.63 km² (1.49%). Due to increase in mining activities total mining area has been increased by 3.87 km² i.e. 0.33% of the total coalfield.

3.3.3 Agriculture

Land primarily used for farming and production of food, fibre and other commercial and horticultural crops falls under this category. It includes crop land and fallow land. Crop lands are those agricultural lands where standing crop occurs on the date of satellite imagery or land is used for agricultural purposes during any season of the year. Crops may be either kharif or rabi. Fallow lands are also agricultural land which is taken up for cultivation but temporarily allowed to rest, un-cropped for one or more season.

The variations in the agriculture area classes are shown in Table 3.6

Area in Sq. Km.

Classes		Year 2014		Year 2017		Change w.r.t. Yr 2014		Remarks
		Area Km ²	%	Area Km ²	%	Area Km ²	%	
Level I	Level II							
Agriculture	Crop land	47.23	3.98	44.88	3.78	-2.35	-0.20	Due to decrease in wasteland
	Fallow Land	175.31	14.77	178.34	15.03	3.03	0.26	
	Total Agriculture	222.54	18.75	223.22	18.81	0.68	0.06	

Analysis of data reveals that agriculture land in Ib Valley Coalfield area increased marginally from 222.54 km² (18.75%) to 223.22 km² (18.81%).

3.3.4 Wasteland

Wasteland is a degraded and under-utilised class of land that has deteriorated on account of natural causes or due to lack of appropriate water and soil management. Wasteland can result from inherent/imposed constraints such as location, environment, chemical and physical properties of the soil or financial or other management constraints (NWDB, 1987). This also includes the sand body formed on the banks of the river owing to the non flow of water there.

The variations in the wasteland area classes are shown in Table 3.7

Area in Sq. Km.

Classes		Year 2014		Year 2017		Change w.r.t. Yr 2014		Remarks
		Area Km ²	%	Area Km ²	%	Area Km ²	%	
Level I	Level II							
Waste Land	Waste Land with/without scrub	77.48	6.53	69.35	5.84	-8.13	-0.69	Decrease in wasteland area is due to increase in mining area and water-body
	Sand Body	3.12	0.26	1.97	0.17	-1.15	-0.10	
	Fly Ash Pond	0.28	0.02	0.28	0.02	0.00	0.00	
	Total Wasteland	80.88	6.82	71.60	6.03	-9.28	-0.78	

Analysis of data reveals that in Ib Valley Coalfield, wasteland covers an area of 71.60 km² (6.03%). In 2014 it was 80.88 km² (6.82%). This decrease of 9.28 km² (0.78%) in waste land area is on account of increase in mining areas and water-bodies.

3.3.5 Settlement/ Built-up land

All the man-made constructions covering the land surface are included under this category. Built-up land has been divided in to rural, urban and industrial classes based on availability of infrastructure facilities. In the present study, industrial settlement indicates only industrial complexes excluding residential facilities. The

percentage of settlement shown in the analysis here is in terms of total land use/cover only.

The variations in settlement area classes are shown in Table 3.8

Area in Sq. Km.

Classes		Year 2014		Year 2017		Change w.r.t. Yr 2014		Remarks
		Area Km ²	%	Area Km ²	%	Area Km ²	%	
Level I	Level II							
Settlements	Urban Settlements	8.23	0.69	8.23	0.69	0.00	0.00	Due to rural development in the area
	Rural Settlements	17.96	1.51	17.99	1.52	0.03	0.00	
	Industrial Settlements	7.78	0.66	7.78	0.66	0.00	0.00	
	Total	33.97	2.86	34.00	2.87	0.03	0.003	

Settlements in Ib Valley Coalfield cover an area of 34.00 km² (2.87%). Analysis of the satellite data of the year 2017 indicates that settlements coming under the coalfield boundary of Ib Valley were distributed between *Urban* (8.23 km²; 0.69%), *Rural* (17.99 km²; 1.52%) and *Industrial* (7.78 km²; 0.66%).

3.3.6 Surface Water bodies

Analysis of data reveals that water bodies in Ib Valley Coalfield occupy an area of 19.88 km² (1.68%).

Area in Sq. Km.

Classes		Year 2014		Year 2017		Change w.r.t. Yr 2014		Remarks
		Area Km ²	%	Area Km ²	%	Area Km ²	%	
Level I	Level II							
Water Body	River/ Ponds	15.76	1.33	19.88	1.68	4.12	0.35	

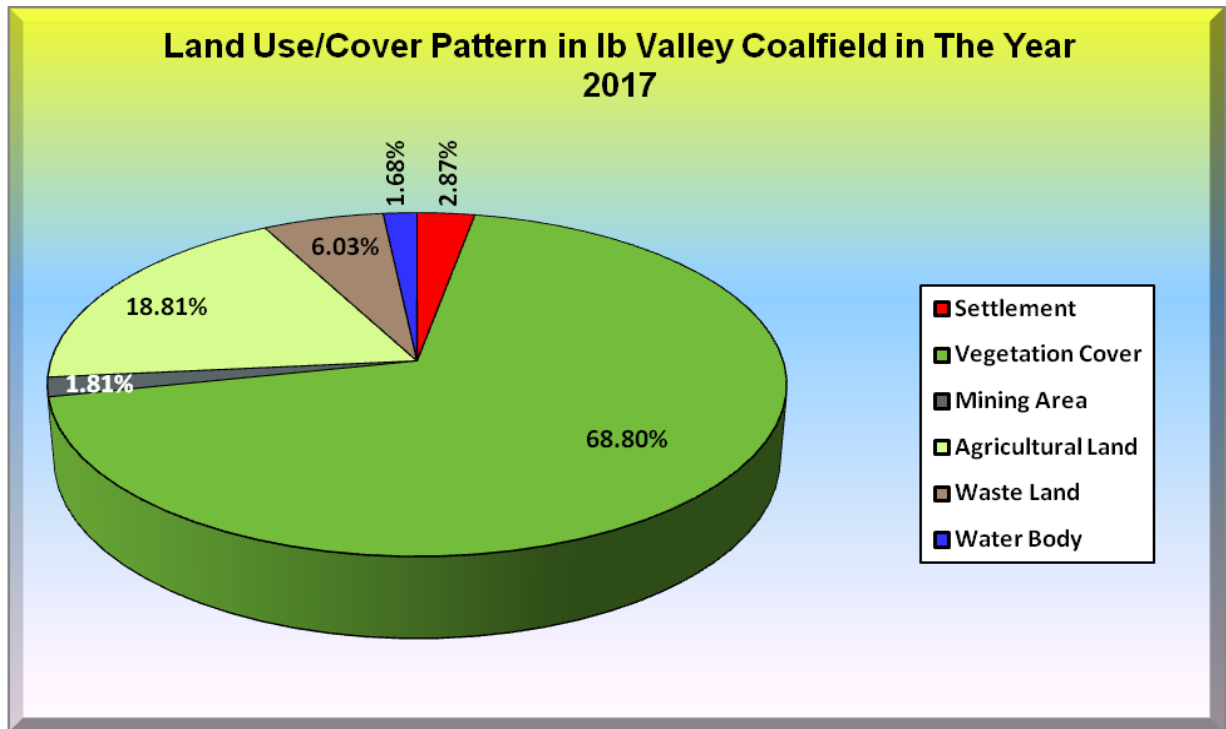


Figure.3.1- Land Use/cover pattern in IB Valley CF in the year 2017

Chapter 4

Conclusion & Recommendations

4.1 Conclusion

In the present study, land use/vegetation cover map of Ib Valley coalfield is prepared on the basis of Resourcesat-2/LISS-IV data of the year 2017 in order to generate the geo-environmental database on vegetation cover and land use pattern for the year 2017 for effective natural resource management and its planning. The Land use/vegetation cover analysis at an interval of three years will help to analyse and monitor the impact of mining and other industrial activities in the area. Study reveals that Ib Valley Coalfield covers an area of about 1186.60 km². Vegetation cover increased by 0.59 km² area. Mining activities increased by 3.87 km² area which is 0.33% of the total coalfield area whereas wasteland decreased by 9.28 km² (0.78%). Water bodies increased by 4.12 km² (0.35%). The detail data analysis is given under Table-3.2.

Recommendations

Keeping in view the sustainable development together with coal mining in the area, it is recommended that similar study should be carried out regularly to monitor the land use and vegetation cover status and impact of coal mining on land environment. The aim of this study is to incorporate the temporal dependence of multi-temporal image data to identify the changing pattern of vegetation cover and consequently enhance the interpretation capabilities. This study identifies both the potential positive and negative impacts of the project. For those negative impacts upon the natural and the socio-economic environment, possible paths/ mitigation measures were identified in advance.



Central Mine Planning & Design Institute Ltd.

(A Subsidiary of Coal India Ltd.)

Gondwana Place, Kanke Road, Ranchi 834031, Jharkhand

Phone : (+91) 651 2230001, 2230002, 2230483, FAX (+91) 651 2231447, 2231851

Website : www.cmpdi.co.in, Email : cmpdihq@cmpdi.co.in